

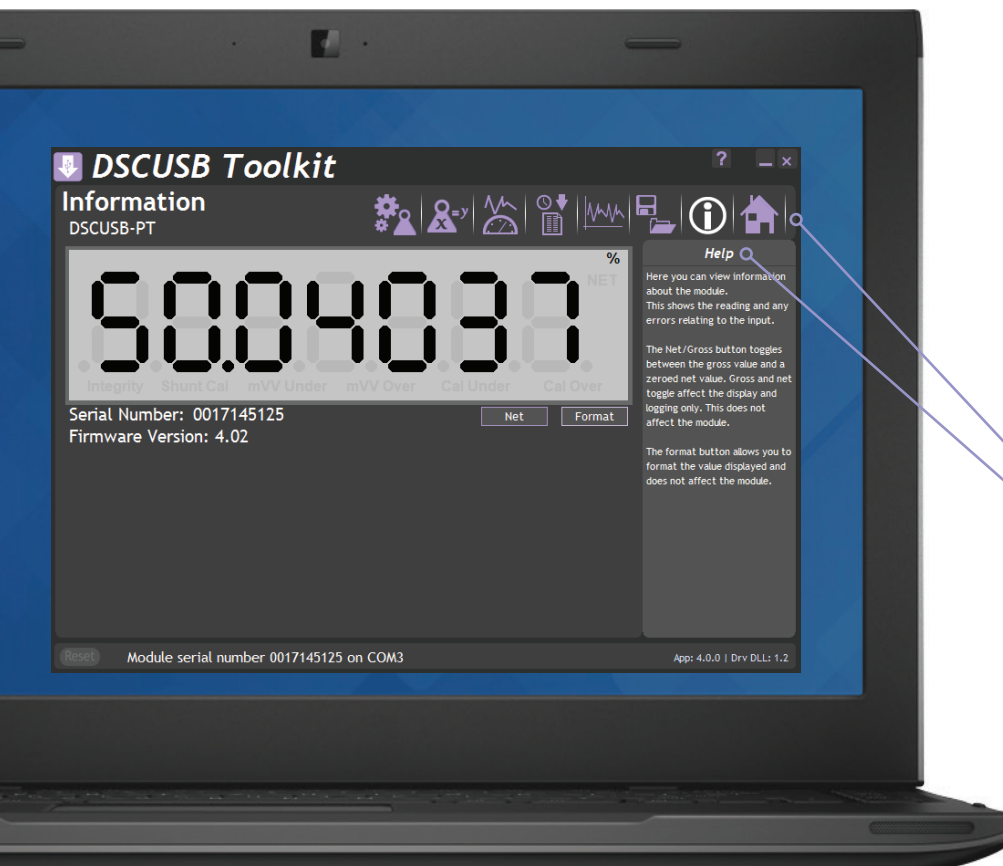


DSCUSB TOOLKIT SOFTWARE

EASY TO USE, INTUITIVE TOOLKIT SOFTWARE FOR SPEEDY AND PAINLESS SET-UP

- **CONNECT IN SECONDS** - with PC auto detection there's no scrolling through lists of product codes.
- **INTUITIVE INTERFACE** - you don't have to read a manual to get started. Our well-designed interface gives you highlighted options so you know what's click-able.
- **LOGICAL** - our Toolkits configure, calibrate and provide logging functionality.
- **WE DO THE THINKING FOR YOU** - our toolkits have useful help panels at each stage of the process to help you make the right choice
- **USE ONE, USE THEM ALL** - our icon based navigation is common to all Toolkits. If you're familiar with one Toolkit you'll quickly pick up the others.
- **FREE** - all of our software is freely available.

TAKE A TOUR



WHAT CAN IT DO?

The DSCUSB Toolkit software for Windows connects with the DSCUSB and DSCUSB-PT via a micro USB to USB lead. The Toolkit allows all aspects of the DSCUSB and DSCUSB-PT to be configured:

- Configure settings
- Calibrate in engineering units
- Save and restore settings to a file
- Log data to a CSV file
- View data on a chart
- Use as a large display

THE DASHBOARD

- Icon based intuitive navigation
- Help panels in 'plain English'
Interactive elements highlighted purple

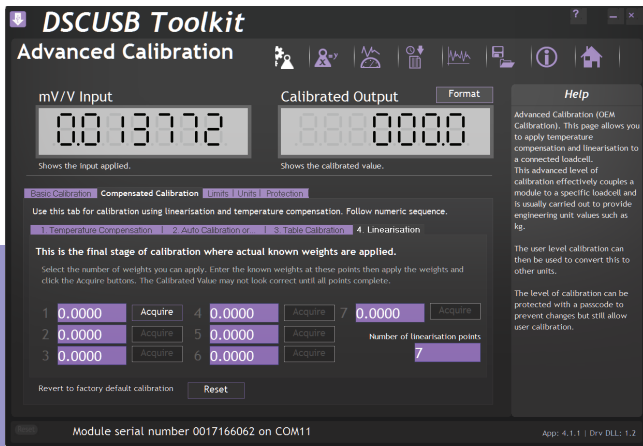
DOWNLOAD & TEST-DRIVE

Visit mantracourt.com



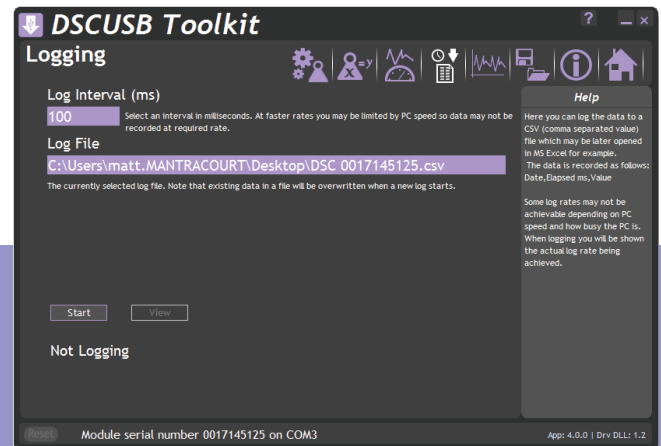
FUNCTIONALITY SCREEN SHOTS

CALIBRATION



Linearised calibration in your chosen engineering units can be achieved by applying known inputs or entering values from a sensor calibration certificate. You can also calibrate the Shunt Calibration so an installed system will always give an output of 100 when Shunt Calibration is activated. This allows for an extremely fast check that your system is still operating correctly without having to disconnect the input sensor.

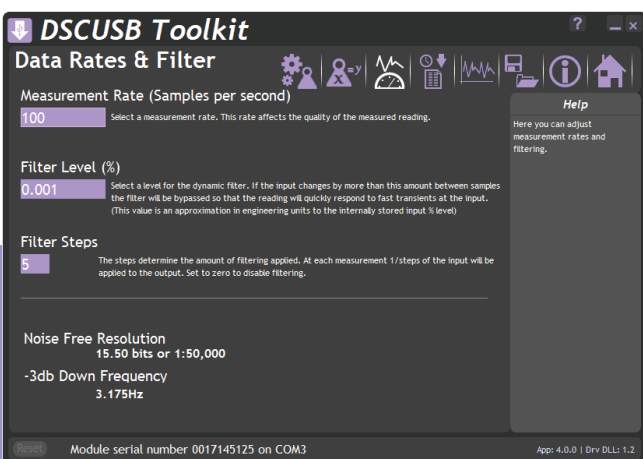
LOGGING



Log data to a CSV file at intervals of between 10 milliseconds and 32 seconds. This allows data to be logged at up to 100Hz and the resulting CSV files can then be analysed in Microsoft Excel or similar application.

The software will warn you if your specified logging rate is faster than the rate at which the module has been configured to generate results.

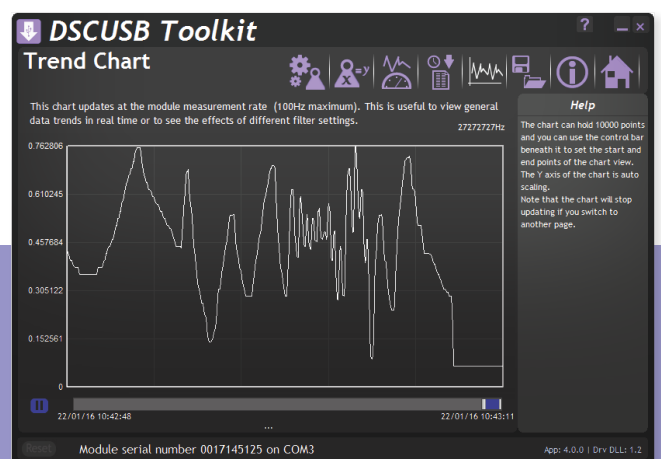
DATA RATES AND FILTER



Here you can configure how fast the module generates new results. The faster the new results are generated the lower the effective noise free resolution will become. The software will show you the expected noise free resolution achievable with your settings.

You can also set up dynamic filtering. You can set the amount of filtering to apply and also a threshold for an input change that can bypass the filter. This gives very fast reaction to step changes on the input yet still delivers filtered results. Use the real-time Trend Chart to see the results of your filter settings.

REAL TIME TREND CHART



Feature a real-time scrolling graphic display. The chart can hold up to 10,000 points and you can zoom and pan through the data. The chart is auto scaling and is ideal for looking at input signals to allow tuning the filters.